

## INTRODUCTION

Thank you for purchasing our faucet. The faucet you have purchased is crafted out of the highest quality brass. Each and every faucet was tested and carefully inspected by hand before delivering to our retailers.

Please read the instructions carefully to prevent any malfunction and damages to your plumbing and property.

## TOOLS

The tools below are required to complete the installation. Some may not be needed, depending on the model of the faucet that you are installing. For additional information, check with your local hardware store on the requirements for your installation.



## IMPORTANT

Before you start with the installation, you must turn off all water supply lines.

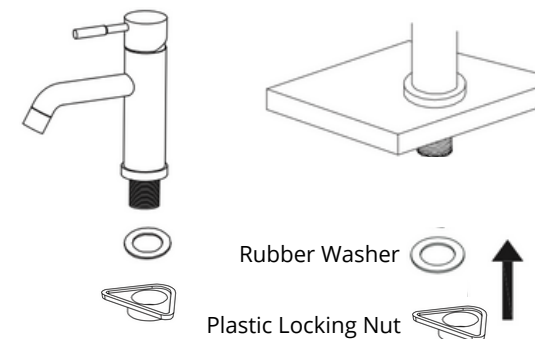
## MAINTENANCE

1. Dip the cloth into mixture of white vinegar and water (50/50) and scrub to remove hard-water spots.
2. Check aerator (if present) regularly for calcium build up are when water stream is not optimum.
3. DO NOT use caustic cleaning products as the use will break down finish and will void the product warranty.
4. If the water pressure appears to be less than optimum remove, inspect, clean or replace aerator.

## SINGLE HOLE MOUNTING

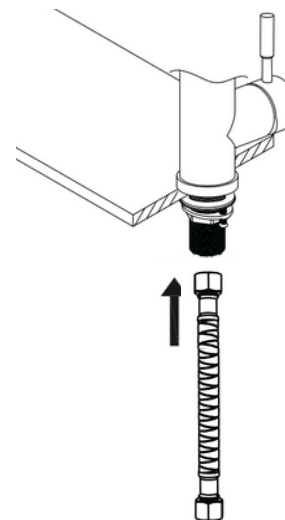
1.

Assemble all the hardware, nuts, and attachments in the correct order.



2.

Assembly the rubber washer, and lock nut onto the faucet, then tighten the locking nut firmly.



3.

Attach the flexible hose to your water supply line. If the flexible hose thread does not match, an additional adapter is required. Using thread sealing tape is advised to prevent leaking.

